

armatage safety news



THANK YOU!

Mother Nature cooperated and gave us a beautiful night to enjoy our annual neighborhood event. We had a terrific turn-out, and received great feedback on the changes that we made this year. Thanks to the volunteers and sponsors who helped to make this all possible.

Planning will start soon for our 2016 festival. If you are interested in being on our planning committee, contact our coordinator at anacoordinator@armatage.org.



WELCOME!

We are excited to welcome three new members to our neighborhood board! Sara, Tara and Laurel bring our board membership up to 10! We are excited to have them on board and look forward to some new energy and fresh ideas.

Winter Prep

Here in Minnesota, winter weather usually hits a little too soon and lasts a little too long. Now is the time to get ahead of the game and get your home ready before this year's Polar Vortex. Sometimes the hardest part is knowing where to start. Home Energy Squad Enhanced is a great resource. At a Home Energy Squad Enhanced visit, two energy professionals assess your home to help you improve comfort, save energy and give you peace of mind.

The City of Minneapolis is now offering free Home Energy Squad visits to income qualified Minneapolis households, and no interest financing for insulation and air-sealing upgrades for a limited time. Home Energy Squad visits are available for \$70 to Minneapolis households over the income limit. The visit includes a blower door test with an infrared camera inspection to identify air leaks and insulation

voids, a safety check of your home's heating system and water heater, and the installation of energy saving materials. Materials may include door weather stripping, a programmable thermostat, CFLs, faucet aerators, shower heads, and a water heater blanket.

At the end of the visit you will receive a customized report with prioritized recommendations for energy upgrades, rebate information and financing options to help you take the next steps. If insulation or air sealing is recommended, you will also receive a quote for the work to be done.

Call 612-335-5874 to check your eligibility or schedule Home Energy Squad your visit today! To learn more visit mncee.org/hes-mpls.



Spookatacular Halloween Party
Armatage Park
Saturday, October 31st 6-8pm
Free

Calling all ghouls, goblins, princesses, superheroes, and costumed critters. Armatage Park will be hosting a safe, fun Halloween party perfect for the whole family. Activities will include a spooktacular night filled with tricks, treats, games, a hayride, bonfire, and toasty s'mores.

Basketball Registration
Opens Wednesday, November 4th 6pm
Ages 5 and up

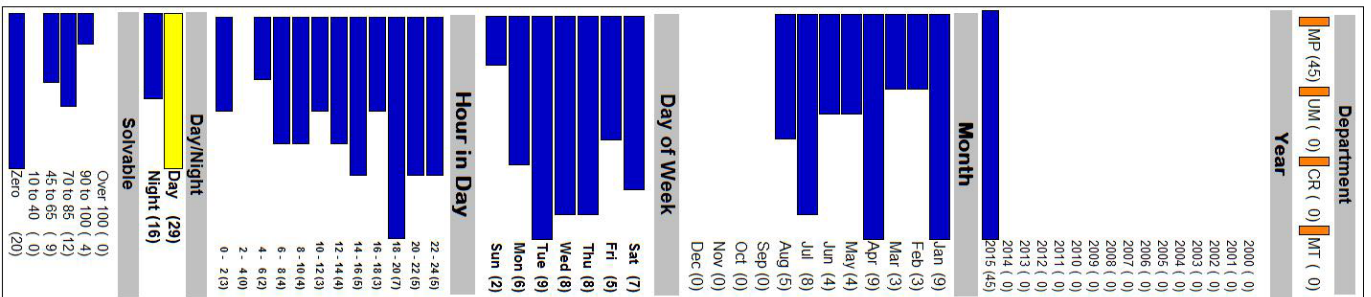
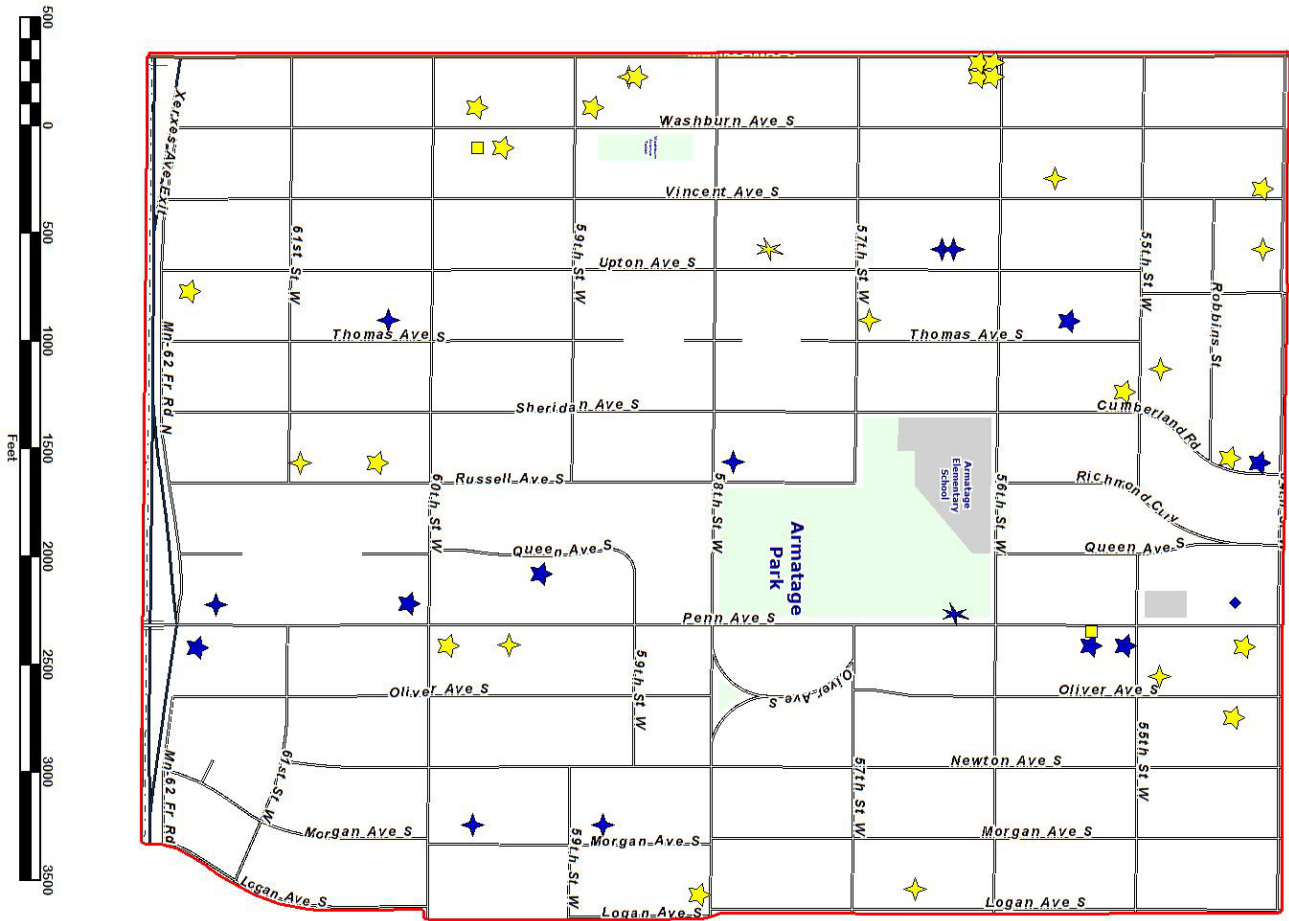
Registration Dates – Thursday, November 5th
at Armatage Park & Tuesday, November 10th at
Kenny Park 6:30-8:00pm

Forms will be available to pick up during
regular business hours at Armatage Park.

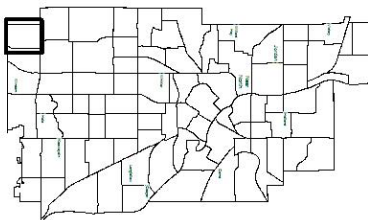
Volunteer coaches NEEDED!

Armatage Part 1 Crimes

January 1 - August 31, 2015



City of Minneapolis



Neighborhoods

Part 1 Crimes
Armatage

1/1/2015 - 8/31/2015

✖ UCR 01-02: Homicide (0)
 ♦ UCR 03: Rape (1)
 ▲ UCR 04: Robbery (0)
 ■ UCR 05: Agg Assault (2)
 ◆ UCR 06: Burglary (16)
 ★ UCR 07: Larceny (24)
 ● UCR 08: Auto Theft (0)
 ★ UCR 10: Arson (2)
 Total - 45 0.244 PSMPD

PART 1 CRIMES

1/1/2014-8/31/2014

Homicide (0)

Rape (0)

Robbery (1)

[the action of robbing
a person or place]

Aggravated Assault (3)

[attempt to cause serious
bodily injury to another or to
cause serious bodily in-
jury purposely, knowingly or
recklessly, with an extreme
indifference to the value of
human life]

Burglary (14)

[unlawful entry into
almost any structure]

Larceny (20)

[theft of personal
property]

Auto Theft (1)

Arson (0)

GET INVOLVED!

Neighborhoods and block clubs work with our Crime Prevention Specialists (CPS) to prevent and reduce crime. There are many advantages to organizing your block:

- Trained block leaders receive **Action Alerts** which release substantially more crime information for reports in the area around their block.
- Block clubs registered with their CPS get prioritized visits by patrol officers on National Night Out.
- Block leaders join a partnership of over 2,000 committed volunteers who, when crime patterns erupt, help ensure they are quickly addressed.

OPEN BLOCKS IN ARMATAGE

58XX & 61XX Morgan

54XX Newton

59XX & 61XX Oliver

55XX Penn

54XX Queen

57XX, 58XX & 61XX Russell

59XX Sheridan

61XX Vincent

58XX Washburn

57XX, 59XX & 60XX

Xerxes

CITIZENS' ACADEMY

Learn directly from investigators, trainers, precinct commanders and officers about police procedures, what it is like to be an officer and how the Minneapolis Police Department is organized at the Citizens' Academy.

This 10-week course offered by the Training Unit of the MPD is open to people who:

- Are 18 years of age;
- Live or work in Minneapolis; or are parents, partners, or spouses of employees of Minneapolis Police Department
- Pass a background check.

Topics include Use of Force, Investigations, K-9 Unit, 911 Operations, Emergency Response Unit and much more.

[http://www.
ci.minneapolis.mn.us/
police/about/training/
police_about_
citizens-academy](http://www.ci.minneapolis.mn.us/police/about/training/police_about_citizens-academy)

RIDE ALONG PROGRAM

The main purpose of the Ride-Along Program is to improve police and public relations by familiarizing participants with the complex and unpredictable nature of police work. It can also be a great introduction to daily life on the police force.

- Participants must normally be 18 years old.
- A Ride-Along is typically four hours.
- Participants will be assigned to a squad or vehicle with two officers.
- Ride-Alongs are limited to one participant per squad or vehicle.
- Officers will instruct Ride-Along participants of expected behavior prior to the ride.
- Ride-Along participants are not authorized to operate any MPD equipment.
- Failure to comply the directives of the officers, or improperly getting involved in a situation, will end the Ride-Along.
- Officers may terminate a Ride-Along at any time.

[http://www.
ci.minneapolis.mn.us/
police/outreach/police_
about_ride_along](http://www.ci.minneapolis.mn.us/police/outreach/police_about_ride_along)

APPLY FOR THE HOMEGROWN MINNEAPOLIS FOOD COUNCIL!

The **Homegrown Minneapolis Food Council** is a City-Community group that works to support all residents and increase access to quality food, address



Homegrown
Minneapolis

hunger and food insecurity, connect sectors of the food system, influence policy and decision making and ensure an environmentally sustainable and socially just food system. Members serve two-year terms.

Find more information and applications online.

[http://www.
minneapolismn.gov/
sustainability/
homegrown/
WCMS1P-143142](http://www.minneapolismn.gov/sustainability/homegrown/WCMS1P-143142)

More City board openings available online.

[http://www.
ci.minneapolis.mn.us/
boards/openings/
index.htm](http://www.ci.minneapolis.mn.us/boards/openings/index.htm)


Minneapolis
City of Lakes

Negotiating roundabouts safely

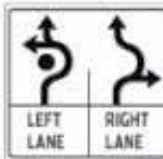
STEP 1 — Slow down

When approaching a multi-lane roundabout, slow down to the speed indicated. Centrifugal force in roundabouts can affect car handling significantly, so obey speed limits.

Pavement signs



Road signs



STEP 2 — Select correct lane

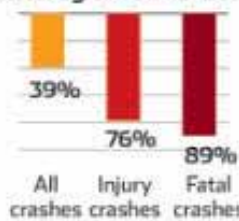
Watch for signs indicating which lanes can be used to exit in which direction. You cannot change lanes once you enter the roundabout.

These signs indicate you may:

- Turn RIGHT from the RIGHT turn lane only.
- Turn LEFT from the LEFT turn lane only.
- Continue straight through the roundabout from either lane.

Source: Minnesota Department of Transportation, Washington County Public Works Department, Insurance Institute for Highway Safety

Crash reduction after switching to roundabouts*



*Based on statistics from 23 intersections

STEP 3 — Yield on entry

When you arrive at the roundabout, watch for pedestrians in the crosswalks. Observe oncoming traffic since you must yield to both.

Traffic in inside lanes may be exiting, so never enter alongside vehicles already circulating in the roundabout.

STEP 4 — Enter

When there is a safe gap in both lanes of oncoming traffic, it is safe to proceed into the roundabout. Traffic flow is always to the right of the center island!

STEP 5 — Select correct exit

Once you've entered the roundabout, you have the right of way. You must remain in your chosen lane until you exit. Watch for pedestrians coming from either direction as you exit the roundabout.

PIONEER PRESS

Connecting with your neighbors

Armatage Neighborhood Association (ANA)

2500 West 57th Street
Minneapolis, MN 55410
612-668-3206

www.armatage.org

anacoordinator@armatage.org

[Sign up for our eNews](#)

[Like us on Facebook](#)

[Follow us on Twitter](#)

Crime Prevention Specialist

Jennifer Waisanen

612-673-5407

jennifer.waisanen@minneapolismn.gov

To receive crime alerts via e-mail, visit:

http://www.ci.minneapolis.mn.us/police/crimealert/police_crime-alert_signup

Sign up for the 5th Precinct quarterly newsletter at:

http://www.ci.minneapolis.mn.us/police/precincts/police_about_5thprecinct

City Council, Ward 13

Linea Palmisano

350 S. 5th St., Room 307
Minneapolis, MN 55415

612-673-2213

linea.palmisano@minneapolismn.gov

[Sign up for the](http://www.ci.minneapolis.mn.us/ward13/news/ward13-subscribe-)

[Ward 13 newsletter at:](http://www.ci.minneapolis.mn.us/ward13/news/ward13-subscribe-)

<http://www.ci.minneapolis.mn.us/ward13/news/ward13-subscribe->

Armatage Nextdoor

Nextdoor is a private social network for you, your neighbors and your community. It's an easy way for you and your neighbors to talk online and make all of your lives better in the real world.

And it's free.

MN Crosswalk Law: Key Elements

- Drivers must stop for crossing pedestrians at marked crosswalks and at all intersections without crosswalks or stop lights.
- Pedestrians must obey traffic signs and signals at all intersections that have them.
- Vehicles stopped for pedestrians can proceed once the pedestrian has completely crossed the lane in front of the stopped vehicle.
- Pedestrians must not enter a crosswalk if a vehicle is approaching and it is impossible for the driver to stop. Use common sense.
- When a vehicle is stopped at an intersection to allow pedestrians to cross the roadway, drivers of other vehicles approaching from the rear must not pass the stopped vehicle.
- Failure to obey the law is a misdemeanor. A second violation within one year is a gross misdemeanor.